

Best Practices in Indigenous Education



Simcoe County
District School Board



Some Statistics for Simcoe County:

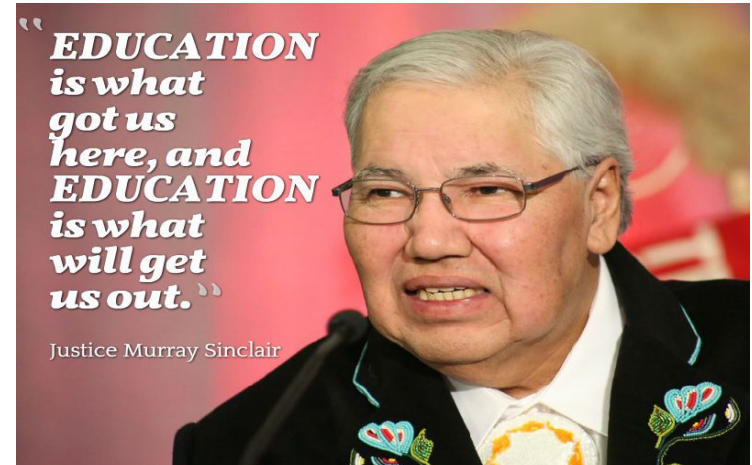
- Simcoe County District Public School has 1746 Self Identified Students
- 22 Inuit Students
- 1154 First Nation
- 570 Métis
- This is 3.4 % of our student population
- Increased by 62 individuals 2016- 2017



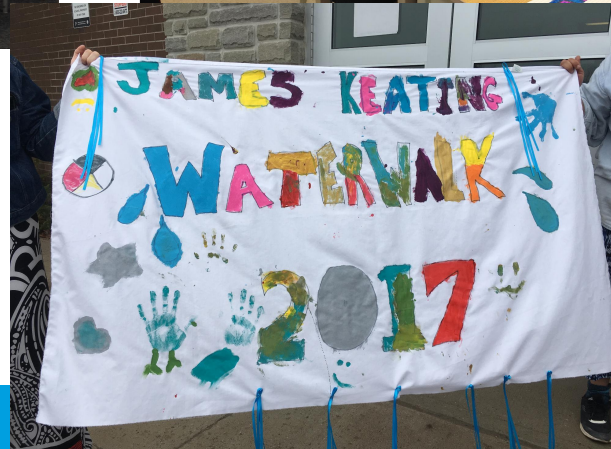
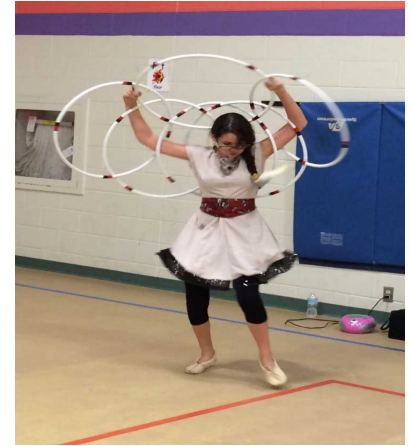
From: Enrollment Register in Powerschool Jan 17 2018

Our Mandate:

- Truth and Reconciliation Calls to Action #s 62 & 63
- Aboriginal Education Office - mandated
- Recognized population that is under performing
- Unique needs for this population
- Trauma informed schools
- MOE First Nation, Metis & Inuit Policy Framework



How is Simcoe County District School Board supporting our Indigenous students?



Our 3 sided approach to supporting students



Direct support of Self
Identified students



Whole class and whole
school programs



Staff development

Direct support for Self Identified Students

- 6 full time student advisors assigned to high needs/high population schools; one to one support, and small groups
- Leadership Gatherings
- Family Engagement Nights
- Special projects
 - OELC
 - Canoe Build
 - Trips



Special Education and Social Work

- Dedicated Special Education Consultant and Social Worker working on a referral basis
- More intensive level support
- Working with students, staff and families to identify challenges and develop strategies
- Work to bridge gaps between school, home and community services i.e. Enaahtig Healing Lodge, area Friendship Centres, Women's Centres



Spec ed partnerships

- Partner with Enaahtig by creating circle of care around a students including social work, Sped Ed IRT, Enaahtig worker, family & other “mainstream” services as needed
- Working to create a connection between home & school, where there may be historical mistrust & conflict
- Social worker accompanies family to appointments, meet in comfortable spaces
- A shift to prioritizing mental health & well being, so for us that is done through culturally connected practices- Seven grandfather teachings, land based pedagogy, developing positive self identity through connection to culture

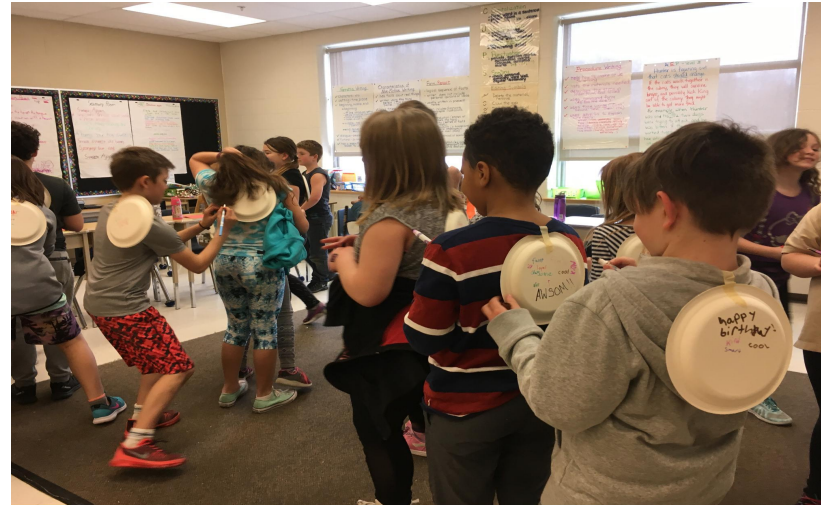


Canoe Build



Whole Class and Whole School Initiatives

- Pow wow Education Day
- Water Walk
- Dancer Performances, Art Projects ([Gshkoziwin Art Project](#))
- Guest speakers: Johnny Issaluk, Delilah Saunders, Michael Cywink, David Bouchard
- Pilot Schools program
- Walking the Path program
- Art displays: Paintings and Poster series
- Beading units (Math)
- Orange Shirt Day
- Medicine Walk at Springwater Park



Staff Development

- 2 dedicated Indigenous Education Resource Teachers supporting all schools
- Collaborative Inquiry (220 participants)
 - Mandatory specific inquiries for Residential school, Missing and Murdered Indigenous Women and Girls, The 60's Scoop
 - Mandatory open collaborative inquiries for every school
- Mandatory historical impact in-service for all office support staff
- Historical impact in-service for Educational Assistants
- Restorative Practices Training for CYWs and Student Advisors
- Support individual projects
- Develop resources and supports for classroom teachers
- Bring authentic voice and community partners



Land Acknowledgement

Daily in Schools:

Simcoe County DSB acknowledges that we are situated on the traditional land of the Anishnaabeg people. We acknowledge the enduring presence of First Nation, Metis and Inuit people on this land & are committed to moving forward in the spirit of reconciliation and respect.

Formal/Special Events:

Simcoe County District School Board acknowledges that we are situated on the traditional land of the Anishnaabeg (/A-nish-**naw**-bek/) people. The Anishnaabeg include the Ojibwe, Odawa (/Oh-**daw**-wha/), and Pottawatomi (/B**oad**-whe-awd-duh-mih/) nations, collectively known as the Three Fires Confederacy. We are dedicated to honouring Indigenous history and culture and committed to moving forward in the spirit of reconciliation and respect with all First Nation, Métis and Inuit people.



Best Practices:

Learn about our common history



Learn about Indigenous culture



Connect with families
and community



Include Indigenous
perspectives in all
areas



Use Authentic
Voices



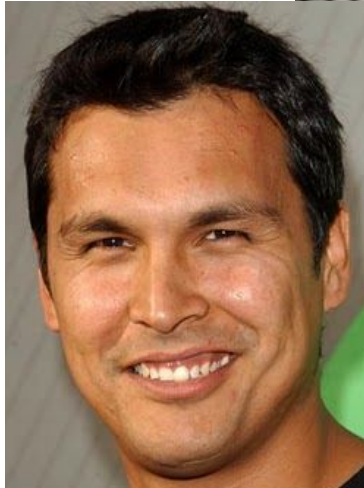
Land Based Inquiry



Create a safe and welcoming space



Use contemporary personalities



**“EDUCATION
is what
got us
here, and
EDUCATION
is what
will get
us out.”**

Justice Murray Sinclair



Ontario Education and Leadership Camp

- For the second year in a row we have sent 6 Indigenous students to the OELC
- It is a unique opportunity to develop leadership skills and share culture
- Very rare opportunity to meet and share with a wide variety of Indigenous students from all over Ontario
- Return to home to be leaders in their leaders in their own community







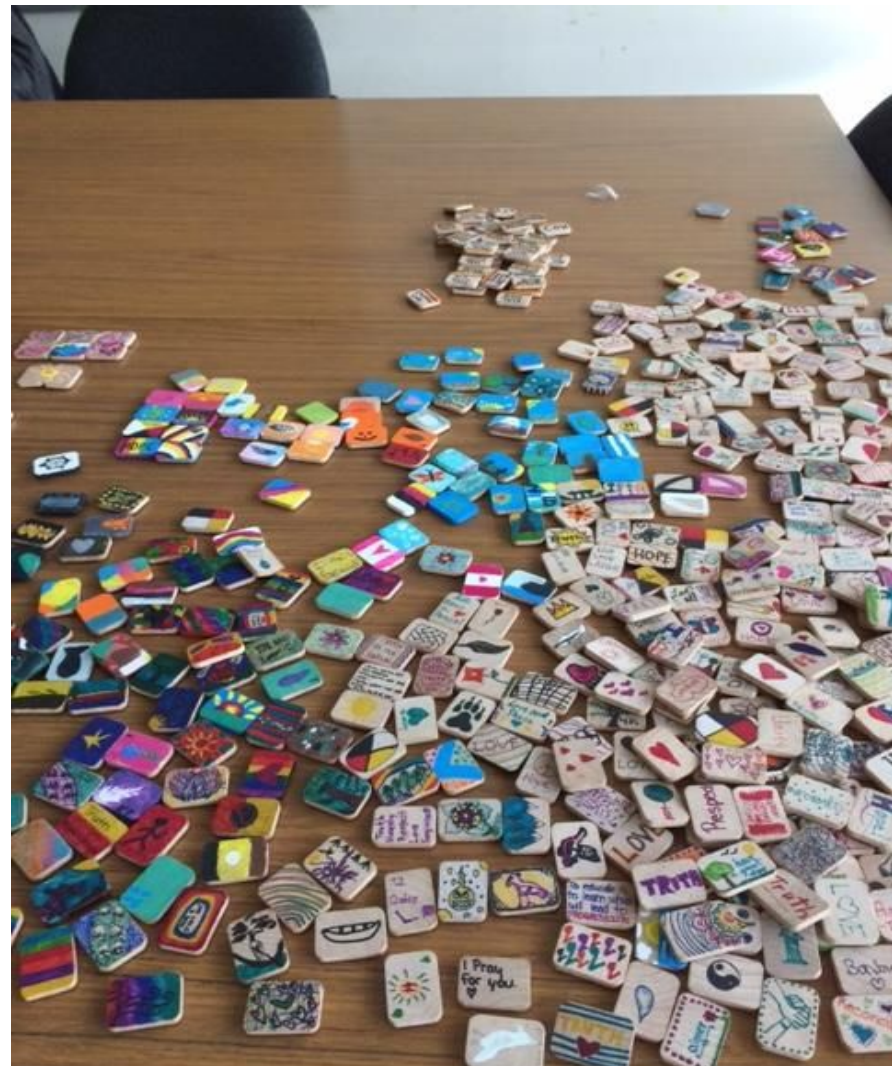










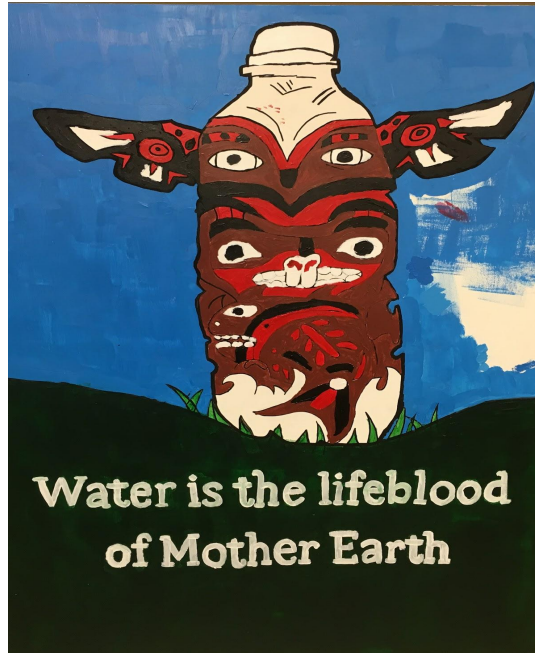




Water Mural Panels



Turtle Island Story



Problem of Bottled Water



Historical Importance



