



Current Educational Landscape

**Building Strong Educational Foundations for the
Participating First Nations
February 8, 2018**

Contents

- The Anishinabek Nation 3
- The Anishinabek Nation Education Agreement..... 4
 - Who is included?** 4
- The Anishinabek Education System..... 5
- Anishinabek First Nation Schools 8
- First Nation School Staff 9
- Educational Facilities 10
- First Nation Student Population 10

The Anishinabek Nation

- Comprised of 40 First Nations
- Represents approximately 60,000 Anishinaabe people
- About 60% of membership resides off reserve
- Geographically and politically divided into 4 Regions: Northern-Superior, Lake Huron, Southeast, and Southwest



Northern Superior

Namaygoosisagagun
 Fort William First Nation
 Pic Moberg First Nation
 Biigtigong Nishnaawbeg
 Long Lake #58 First Nation

Pays Plat First Nation
 Michipicoten First Nation
 Sand Point First Nation
 Biinjitiwaabik Zaaging Anishinaabek
 Red Rock Indian Band

Lake Huron Region

Ojibways of Garden River
Thessalon First Nation
Mississauga #8 First Nation
Serpent River First Nation
Sheshegwaning First Nation
M'Chigeeng First Nation
Ojibways of Aundeck Omni Kaning
Sheguindah First Nation
Wasauksing First Nation

Wikwemikong Unceded Indian Territory
Whitefish River First Nation
Whitefish Lake First Nation
Wahnapiatae First Nation
Nipissing First Nation
Dokis First Nation
Henvey Inlet First Nation
Magnetewan First Nation

Southeast Region

Algonquins of Pikwakanagan
Moose Deer Point First Nation
Beausoleil First Nation
Curve Lake First Nation

Alderville First Nation
Mississaugas of Scugog Island
Chippewas of Georgina Island
Chippewas of Rama First Nation

Southwest Region

Chippewas of Kettle & Stony Point
Chippewas of the Thames

Munsee-Delaware Nation
Aamjiwnaang First Nation

The Anishinabek Nation Education Agreement

On August 16, 2017, after over 20 years of negotiations, 23 Anishinabek First Nations and Canada signed the Anishinabek Nation Education Agreement. Under this agreement Canada recognizes First Nation control over education for Junior Kindergarten to Grade 12, creates the Anishinabek Education System (AES) and confirms the First Nation on-going administration of Post-Secondary Student Support Program.

Who is included?

- 23 Anishinabek First Nations in Ontario
- about 25,000 Anishinabek
- about 1,700 students on-reserve from JK to Grade 12
- about 11,000 students off-reserve from JK to Grade 12
- the other 17 Anishinabek Nation may ratify the Anishinabek Nation Education Agreement and become part of the Anishinabek Education System
- 7 of the 17 First Nations have indicated their desire to become part the Anishinabek Education System in recent months

The current Participating First Nations are:

- Long Lake #58 First Nation
- Pic Mobert First Nation
- Biigtigong Nishnaabeg
- Biinjitiwaabik Zaaging Anishinaabek
- Atikameksheng Anishnawbek
- Michipicoten First Nation
- Aundeck Omni Kaning First Nation
- Sheshegwaning First Nation
- Whitefish River First Nation
- Zhiibaahaasing First Nation
- Dokis First Nation
- Henvey Inlet First Nation
- Moose Deer Point
- Nipissing First Nation
- Magnetawan First Nation
- Wahnapiatae First Nation
- Wasauksing First Nation
- Aamjiwnaang First Nation
- Beausoleil First Nation
- Chippewas of Georgina Island
- Chippewas of Rama First Nation
- Mississaugas of Scugog Island First Nation
- Munsee Delaware Nation

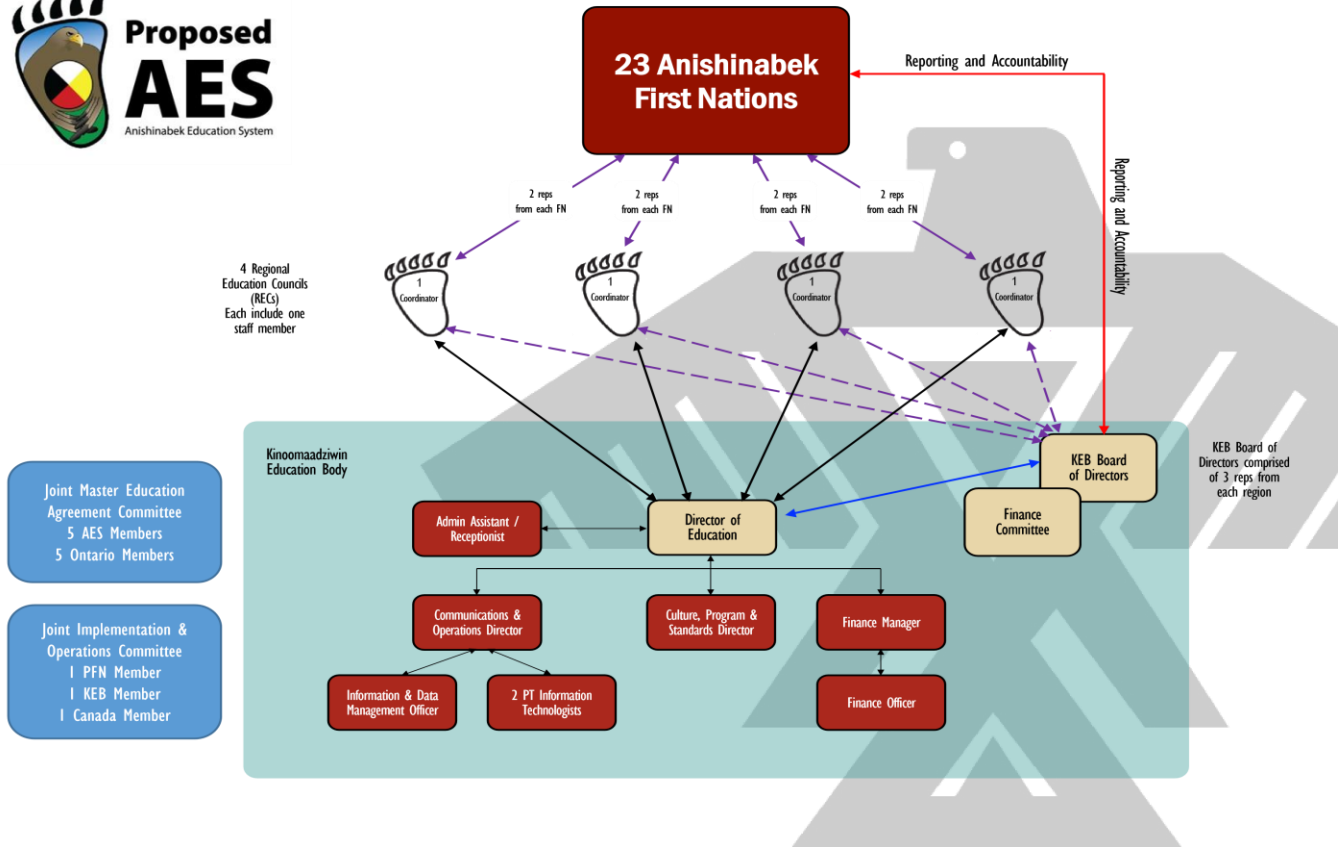
The Anishinabek Education System

- First Nations control education from Junior Kindergarten to Grade 12 on reserve
- Promotes Anishinaabe culture and language
- Creates Anishinabek education standards to support transition of students between schools
- Comprised of 23 First Nations, 4 Regional Education Councils (RECs) and one central education body called the Kinoomaadziwin Education Body (KEB)
- KEB and RECs support education programs and services as requested by the First Nations
- Funding support continues for JK to grade 12 and post-secondary students
- New funding negotiated to operate the Anishinabek Education System
- Each First Nation has full control over the delivery of education programs and services for JK to Grade 12
- Each First Nation will receive their education funding as a grant and have full authority to determine how the funding will be used for education in their First Nation
- Intended to build on existing working relationships and continue to support current collaborative work on education for the 23 First Nations, not to disrupt or discontinue existing working relationships in education

The Regional Education Councils are:

Regional Education Council 1 4 First Nations	Long Lake No.58 First Nation Biinjitiwaabik Zaaging Anishinaabek Biigtigong Nishnaawbeg Pic Mobert First Nation
Regional Education Council 2 6 First Nations	Michipicoten First Nation Atikameksheng Anishnawbek Whitefish River First Nation Sheshegwaning First Nation Zhiibaahaasing First Nation Aundeck Omni Kaning
Regional Education Council 3 7 First Nations	Nipissing First Nation Wahnapiatae First Nation Dokis First Nation Henvey Inlet First Nation Magnetawan First Nation Wasauksing First Nation Moose Deer Point First Nation
Regional Education Council 4 6 First Nations	Chippewas of Rama First Nation Mississaugas of Scugog First Nation Chippewas of Georgina Island First Nation Munsee Delaware Nation Aamjiwnaang First Nation Beausoleil First Nation

This is the current organizational chart of the Anishinabek Education System.



Anishinabek First Nation Schools

There are 11 First Nations' elementary schools on-reserve and 5 First Nations' secondary school programs operating on-reserve. One First Nation – Long Lake #58 First Nation – has a closed school system where all of their students attend elementary and secondary school on-reserve. In summary, there are 16 First Nation school programs operating in 13 First Nations.

That leaves 10 First Nations that send all of their student's off-reserve to provincially funded schools.

First Nation	School	Grades
Southeast Region		
Beausoleil First Nation	Christian Island Elementary School	K-8
Beausoleil First Nation	Adult Learning Centre	9+
Chippewas of Georgina Island	Waabgon (Georgina Island School)	K-5
Chippewas of Rama	Mnjikaning Kendaaswin Elementary School	K-8
Southwest Region		
Aamijiwnaang First Nation	Aamijiwnaang	Pre-K
Lake Huron Region		
Dokis First Nation	Dokis Indian Day School Kikendawt Kinoomaadii Gaming	JK-4
Nipissing First Nation	Nibisiing High School	9-12
Sheshegwaning First Nation	St. Joseph's Anishinabek	K-3
Wasauksing First Nation	Kinomaugewgamik	K-8
Whitefish River First Nation	Shawanoswe School	JK-6
Superior Region		
Rocky Bay (Biinjitiwaabik Zaaging Anishinaabek)	Biinjitiwaabik Zaaging Anishinaabek	JK-8
Long Lake #58	Eagle Nest Elementary (Migzi Wasisin)	SK-8
Long Lake #58	Migzi Miigwanan Secondary School	9 - 12
Biigtigong Nishnaawbeg	Private High School	9-12
Biigtigong Nishnaawbeg	Pic River Elementary	K-8
Pic Moberg First Nation	Netamisakmik Centre	JK-8

First Nation School Staff

Here is a snap shot of the staffing levels in a number of the First Nation schools.

First Nation School	# of Staff	Staff Positions
Kikendawt Kinoomaadii Gaming, Dokis First Nation JK-4	4	4 Teachers 1 Secretary
Waabgon Gamig School, Chippewas of Georgina Island – K to Grade 5	6	Education Manager School Success Team Leader Primary Teacher Elementary Teacher 2 Education Assistant
Nbisiing Secondary School, Nipissing First Nation Grade 9 to 12	18	Principal Vice Principal, English Teacher 2 Ojibway Teachers Geomatics, Environmental Resources and Aboriginal Beliefs Chemistry, Physics, Co-Op and Dual Credits Outdoor Education, Marketing and Science Green Industries, History and Music Math and English Literacy and Student Success Physical Education, Media Arts and Technology Hospitality and Visual Arts 2 Educational Assistants Administrative Assistant 2 Custodians
Christian Island Elementary School, Beausoleil First Nation – Kindergarten to Grade 8	13	Principal Administrative Assistant JK/SK Teacher Grade 1 teacher Grade 2/3 teacher Grade 4/5 Teacher Grade 6/7 Teacher Grade 8 Teacher Reading Recovery Native Language Education Assistant
Adult Learning Centre, Beausoleil First Nation – Grade 9+	5	Principal Administrative Assistant Education Assistant Student Support Worker Adult Education
Netamisakomic Centre, Pic Mobert First Nation JK-Grade 8	8	Principal Administrative Assistant JK/SK Teacher Grade 1/2 Teacher Grade 3/4/5 Teacher Grade 6/7/8 Teacher

Educational Facilities

Here is some information regarding the age and size of some of the First Nation schools.

First Nation	Buildings	Year Constructed	Size (sq m)
Beausoleil	Christian Island Elementary	1978	1013.6
	Elementary School Addition	2001	280.8
Chippewas of Georgina Island	Waabgnon School	1950	576.1
	School Addition	2002	125.3
Chippewas of Rama	MKES Elementary School	1998	1986.79
Dokis First Nation	Kikendwat Kinoomaadwi Gamig	2004	1630
Sheshegwaning	St. Josephs Anishinawbek	1985	518.62
Wasauksing	Wasauksing Kinomaugewgamik	1989	518.35
Whitefish River	Shawanoswe School	2007	1433.05
Bijitiwabik Zaaging Anishinaabek Long Lake #58	Spirit Bay School	2011	977
	Migizi Wazisin Elementary	2000	2288.35
	Biimaadiziwin Center Classrooms	2010	170.59
Ojibways of Pic River Pic Mobert	Pic River Elementary School	1982	1008.5
	Netamiskomik Center for Education	1998	1355.6

First Nation Student Population

First Nation	REC	Total FN Population	Students living On-Reserve	Students living off-reserve and attend on-reserve school	Students living off reserve and attend off-reserve schools	Student Population
1 Chippewas of Aamjiwnaang	4	2111	163	0	715	878
2 Munsee-Delaware Nation	4	615	37	0	273	310
3 Beausoleil	4	2285	166	0	805	971
4 Chippewas of Georgina Island	4	847	38	0	420	458
5 Mississaugas of	4	225	16	0	110	126

First Nation	REC	Total FN Population	Students living On-Reserve	Students living off-reserve and attend on-reserve school	Students living off reserve and attend off-reserve schools	Student Population
Scugog						
6 Moose Deer Point	3	462	40	0	216	256
7 Chippewas of Rama	4	1609	164	16	484	810
8 Biinjitiwabik Zaaging Anishinaabek	1	716	62	0	215	277
9 Long Lake #58	1	1452	144	0	520	664
10 Michipicoten	2	1086	8	0	556	564
11 Biigtigong Nishnaawbeg	1	1139	100	0	341	441
12 Pic Mobert	1	941	76	0	341	417
13 Aundeck Omni Kaning	2	752	81	0	268	349
14 Dokis	3	1158	30	0	682	712
15 Henvey Inlet	3	641	26	0	320	346
16 Magnetawan	3	252	20	0	119	139
17 Nipissing	3	2574	192	87	960	1164
18 Sheshegwaning	2	384	28	0	204	232
19 Wahnapiatae	3	423	26	0	238	264
20 Wasauksing	3	1090	87	0	490	577
21 Atikameksheng Anishinawbek	2	1167	80	0	353	433
22 Whitefish River	2	1253	93	0	550	643
23 Zhiibaahaasing	2	166	18	0	84	102
			1695	103	9,264	11,062
			15%*	1%	84%	

* of this number approximately 7% attend school on-reserve and 8% attend school off-reserve. In total, 92 % of all Anishinabek students attend school off-reserve in the provincial school system